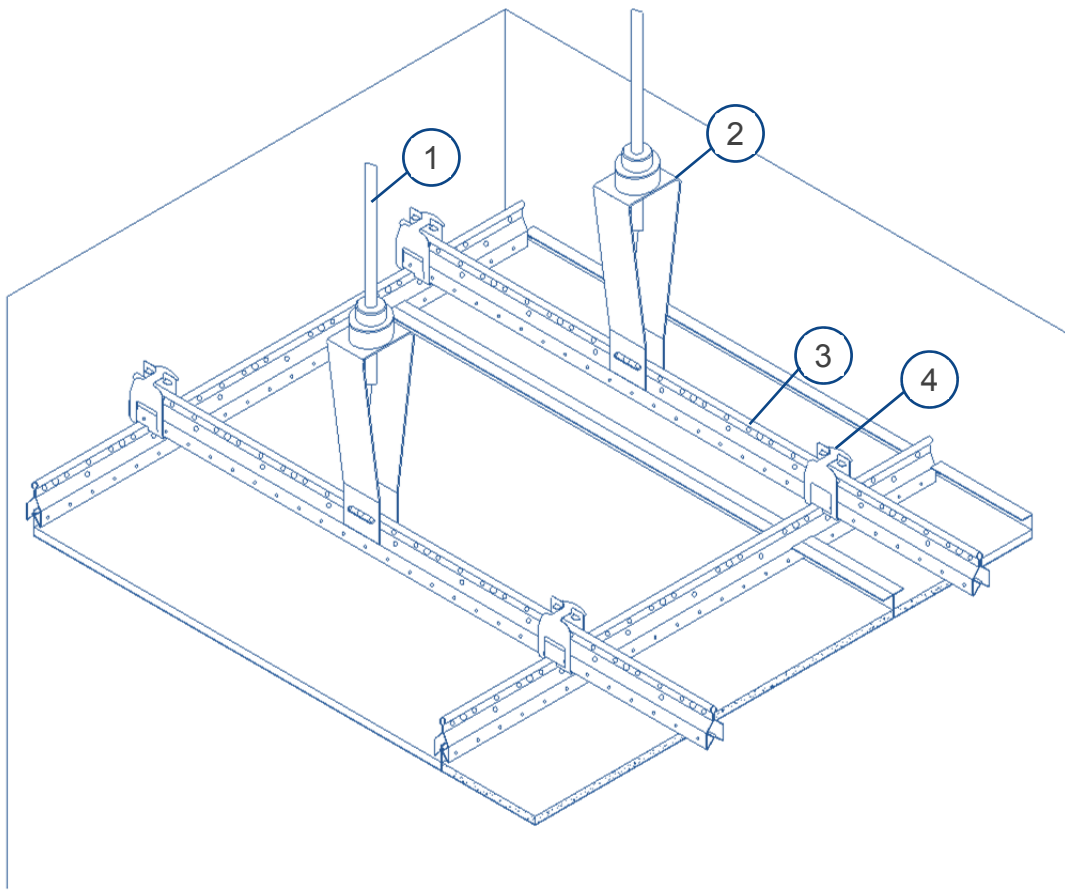
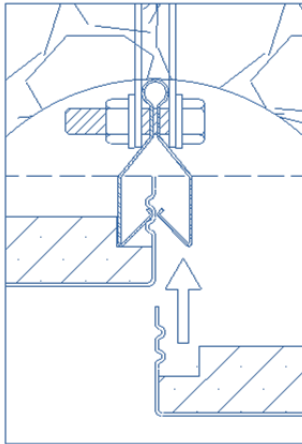


B CLASS CASSETTE TYPE CEILING SYSTEM LM46-LWC-B15

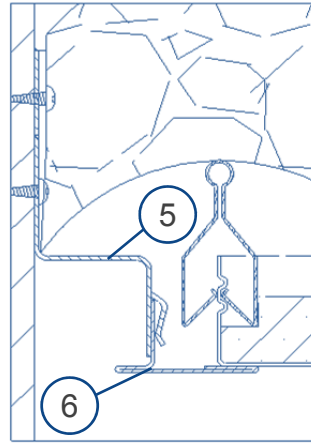
- Interior ceiling system of cassette type, product designation LM46-LWC-B15
- Cassettes to be of 0,8mm steel sheet metal. Surface to be galvanized, foil covered or lacquered in accordance with customers' requirements. Special execution in stainless steel or for coverings to be done by customer of i.e. leather possible
- Maximum dimension in accordance with module B certificate 102.333 to be LxW: 2000x500mm, minimum dimension to be not less than 150x150mm
- Core material to be mineral wool with a density not less than 220kg/m³. System to be covered by additional layer mineral wool of 45kg/m³ for B15 purpose
- C class execution with lower core density (150kg/m³), larger dimensions and without additional cover layer possible
- Substructure of clamping profiles of galvanized steel (single length to be 4000mm) in longitudinal as well as in transverse direction. Profiles connected by cross- (app. 6pcs./m²), longitudinal- (app. 4pcs./m²) and T-connectors (app. 6pcs./m²). Amount and type of connectors to be in accordance with respective room situation
- Quantity of hanger /threaded bolt combination connecting the profile grid to the ship structure in accordance with final weight of panel system. Standard amount of 5pcs./m². Hanger of type Hilbig HG40/T
- Different ceiling profiles to connect wall and ceiling system available

PRINCIPAL ARRANGEMENT

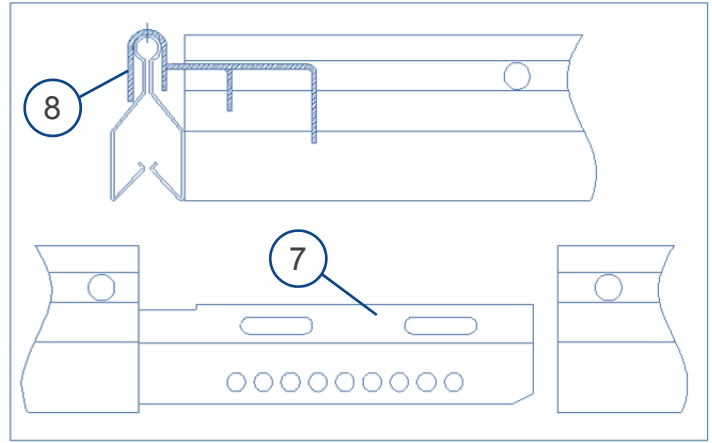
DETAILS



panel connection



wall / ceiling connection



profile connector

SYSTEM COMPONENTS

1. threaded bolt
2. hanger type Hilbig HG40/T
3. longitudinal profile L:4000mm; galvanized steel
4. main profile bracket / cross connector; galvanized steel
5. clamping substructure profile L:2500mm; galvanized steel
6. cover profile L:2500mm; steel, surface in accordance with cassettes
7. main longitudinal profile connector L: 180mm; galvanized steel (not shown)
8. T-joint connector; galvanized steel (not shown)
9. further profiles on request

TECHNICAL DATA

System weight	[kg/m ²]	~13.5 (400 x 1200; B15) ~11,0 (400 x 1200; C)
Fire classification		C & B15
Certificate no.		SeeBG no. 102.333
Max. dimension (L x W)	[mm]	2000 x 500
Surface executions		raw / PVC foil / powder coated / stainless steel
Core material , density	[kg/m ³]	mineral wool, 220 & 45 (B15); 150 (C)